



# **SSAFE & Animal Welfare**

**by Quincy Lissaur**

**Executive Director of SSAFE**

# SSAFE

AGILE



NIMBLE



EFFECTIVE



SSAFE is a global non-profit membership organization that works to protect Human, Plant & Animal Health (“One Health”) by responding quickly to emerging issues that affect the safe supply and trade of food around the world

Our collective expertise, from within our membership and through our collaborating partners, is deployed to deliver impactful solutions in a rapidly changing food environment

# SSAFE

## Members



DANONE



## Partners





## SSAFE & Animal Welfare

The base for good Global Animal Welfare practices starts with OIE's Standards and the Five Freedoms as set out within them

Avoid using Animal Welfare practices as a prelude to restrict trade in animal-based food products across international borders

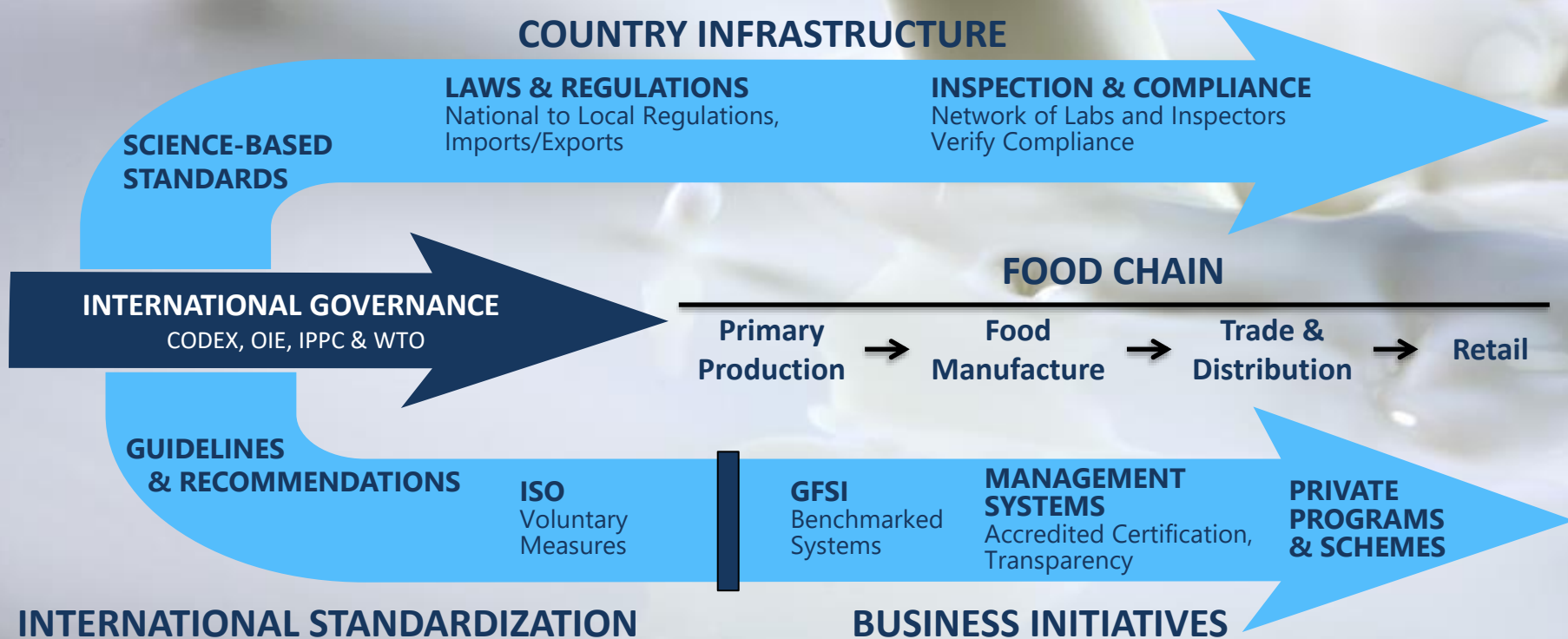
Encourage private industry, particularly in developing markets, to align with and meet OIE's guiding principles and standards on animal welfare

Promote the adoption of ISO TS 34700 for Animal Welfare, a practical tool to help promote good animal welfare practices across the globe

Support certification programs that are aligned with OIE standards to strengthen consumer confidence and drive global harmonization of science-based principles in AW



## Global-to-Local Food Governance Systems



# Lessons from Food Safety

**Public-Private Partnerships benefit all food system stakeholders including regulators, the private sector and consumers**

**Private-sector alignment with official standard-setting organizations improve business performance, enable supply-chain assurance and facilitate international trade**

**ISO serves an important role in establishing and continuously improving practical tools which help all private sectors function more effectively**

**Independent benchmarking and good governance mechanisms are necessary to establish equivalency and drive global acceptance of private accredited certification programs**





## Impact & Value of ISO TS 34700

Recognizes OIE's principles as THE global Animal Welfare Standard

Facilitates market access and trade

Establishes an independent governance mechanism to ensure credibility of private certification schemes

Enables benchmarking and transparency against OIE principles, criteria and standards

Improves the environment, care and management of livestock through better implementation of TAHC principles

Provides guidance to enable animal producers to manage the welfare of their livestock

Respects geographical, environmental, cultural and religious differences

**But more work is needed to support adoption and effectiveness...**

# SSAFE

**Unified, global,  
multidisciplinary,  
collaborative Animal  
Welfare stakeholder  
base**

**Outcomes-based  
approach while inputs  
and management-based  
measures**

**Balanced approach  
between science and  
practical on-farm  
practices**

**Regional, economic,  
cultural and religious  
differences**

**Common harmonized  
base level of good  
Animal Welfare practices  
to avoid trade barriers**

**Fundamental  
differences between  
species requires OIE  
standards as a base  
supported by additional  
species-specific  
implementation  
guidance**





## **SSAFE's GOAL**

Continuous improvement in animal welfare through harmonized global standards for animal welfare, supported by government, industry and consumers, that are:

- i. developed through scientific research
- ii. outcomes-based
- iii. support international trade
- iv. provide true welfare for food producing animals

# SSAFE



**THANK YOU**

[www.ssafefood.org](http://www.ssafefood.org)  
[qlissaur@ssafefood.org](mailto:qlissaur@ssafefood.org)