

# New developments in using Milk Recording Information in South Africa

Session: T3 Wed 30 May 16:30.

Information Systems for Providing Farmers (and Breeders) with Information Needed to Increase Profitability.



Japie van der  
Westhuizen\*  
Bobbie van der  
Westhuizen  
Schalk Greyling  
Suretha Francis  
Tim Bouw



SA STAMBOEK  
STUD BOOK

# Brief background

- ▶ Since 1 January 2012, industry financed and owned recording system.
- ▶ *Logix* *Animal Recording*
  - First priorities for *Logix* *Milk*
    - Use of recorded data for immediate management intervention in dairy herds.
    - Faster turn-around time.
    - Web integration of all services.
  - All services in one organisation.
  - Partnership with science and academic institutions, laboratories, AI organisations, pharmaceuticals, feed companies, etc.

# Principles *Logix*<sub>Milk</sub>

- ▶ Interactive Web based
  - Allow different levels of access – herd owner driven
  - Involve all technical advisors to create unique reports and interact.
- ▶ Levels of response:
  - Mobile text message
  - eMail with 3 files: SCC, Ketosis and Acidosis ‘alert’
  - Series of graphs and tables available on Web
  - Detailed report and comments by dairy expert (pdf)

# Benchmarking

- ▶ New to SA dairy farmers
- ▶ Benchmarking herds users' own choice
  - Typical:
    - Herds in own area
    - District
    - Study group
    - Herds with similar production system
    - Within breed
    - Combination

# Aspects addressed

- ▶ Milk production tendencies and variation
- ▶ Milk composition and quality
- ▶ Nutritional needs and deficiencies
- ▶ Fertility levels
- ▶ Genetic merit
- ▶ Production efficiency

# One glance graphic summary

Logix  
Melk  
Milk

## ICAR Example

Comments and Recommendations: Japje



Breeder: 0457760

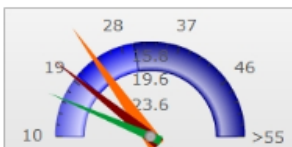
Test Day: 07-MAY-12

2012-02-27

2012-04-16

2012-05-07

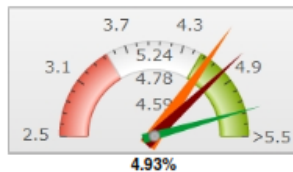
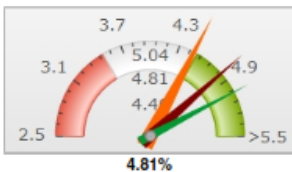
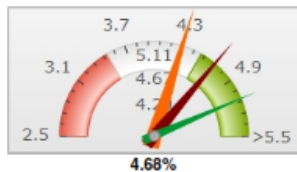
### 24 Hour Production



### STANDARD 24 Hour Production



### % Butterfat



### % Protein



2012-02-27

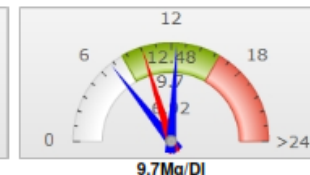
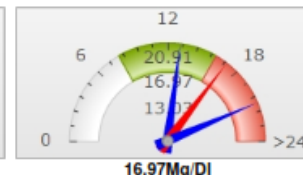
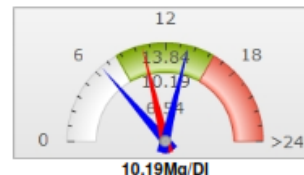
2012-04-16

2012-05-07

### % Lactose



### MUN (Kg/DI)



Breeder: 0064229

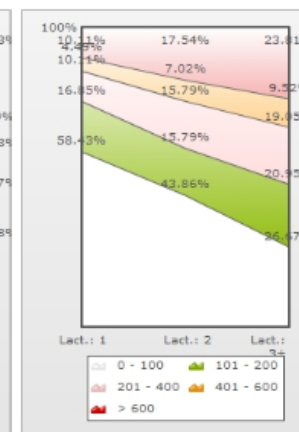
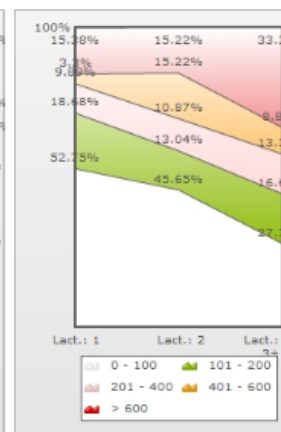
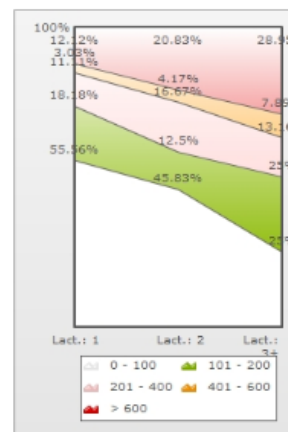
Test Day: 07-MAY-12

2012-02-21

2012-03-19

2012-05-07

### Somatic Cell Count (x1000)

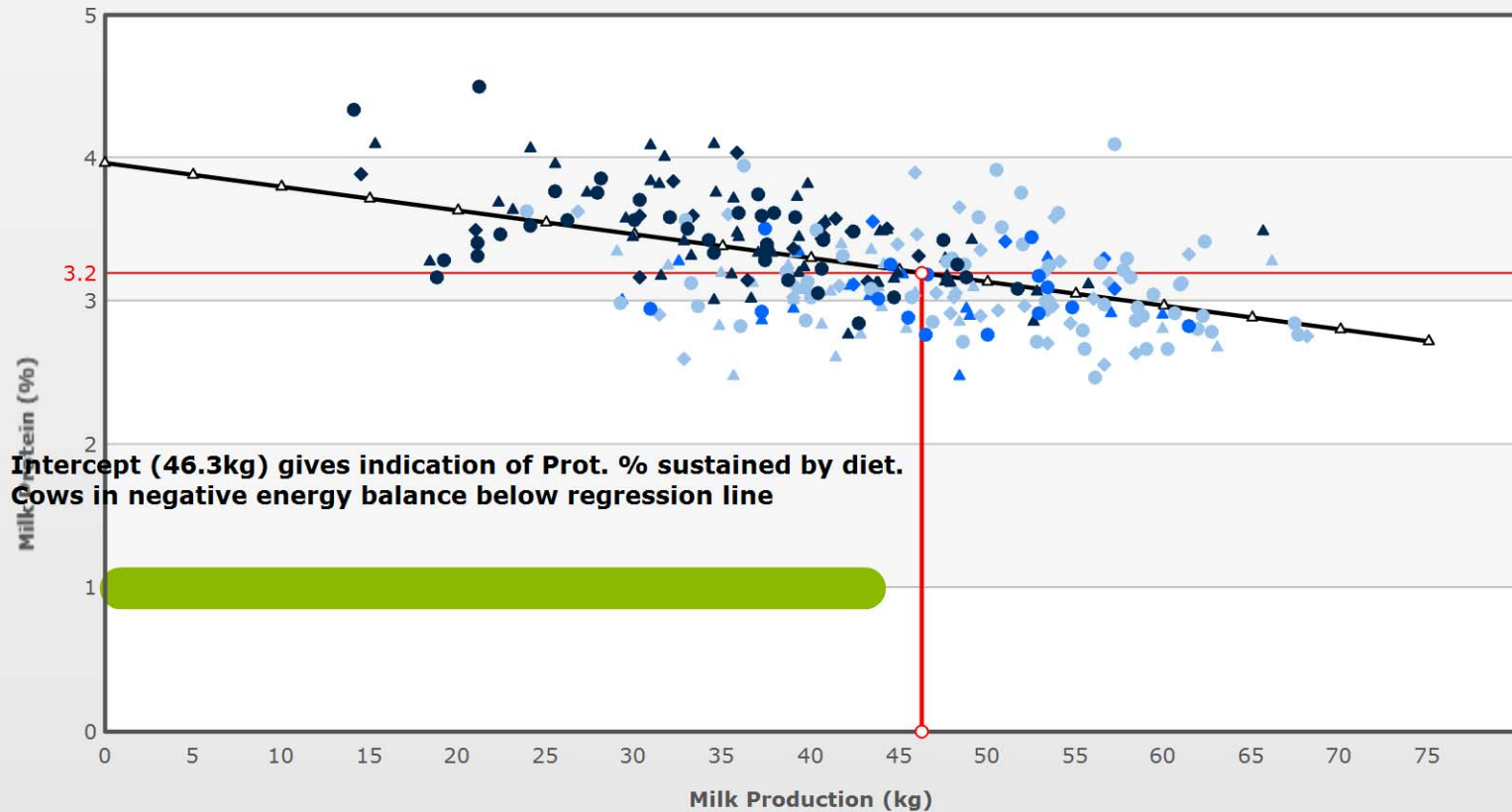


	Lact.: 1	Lact.: 2	Lact.: 3+
0 - 100	55	22	19
101 - 200	18	6	19
201 - 400	11	8	10
401 - 600	3	2	6
> 600	12	10	22

	Lact.: 1	Lact.: 2	Lact.: 3+
0 - 100	48	21	25
101 - 200	17	6	15
201 - 400	9	5	12
401 - 600	3	7	8
> 600	14	7	30

	Lact.: 1	Lact.: 2	Lact.: 3+
0 - 100	52	25	28
101 - 200	15	9	22
201 - 400	9	9	20
401 - 600	4	4	10
> 600	9	10	25

# Detailed graphs: Energy balance

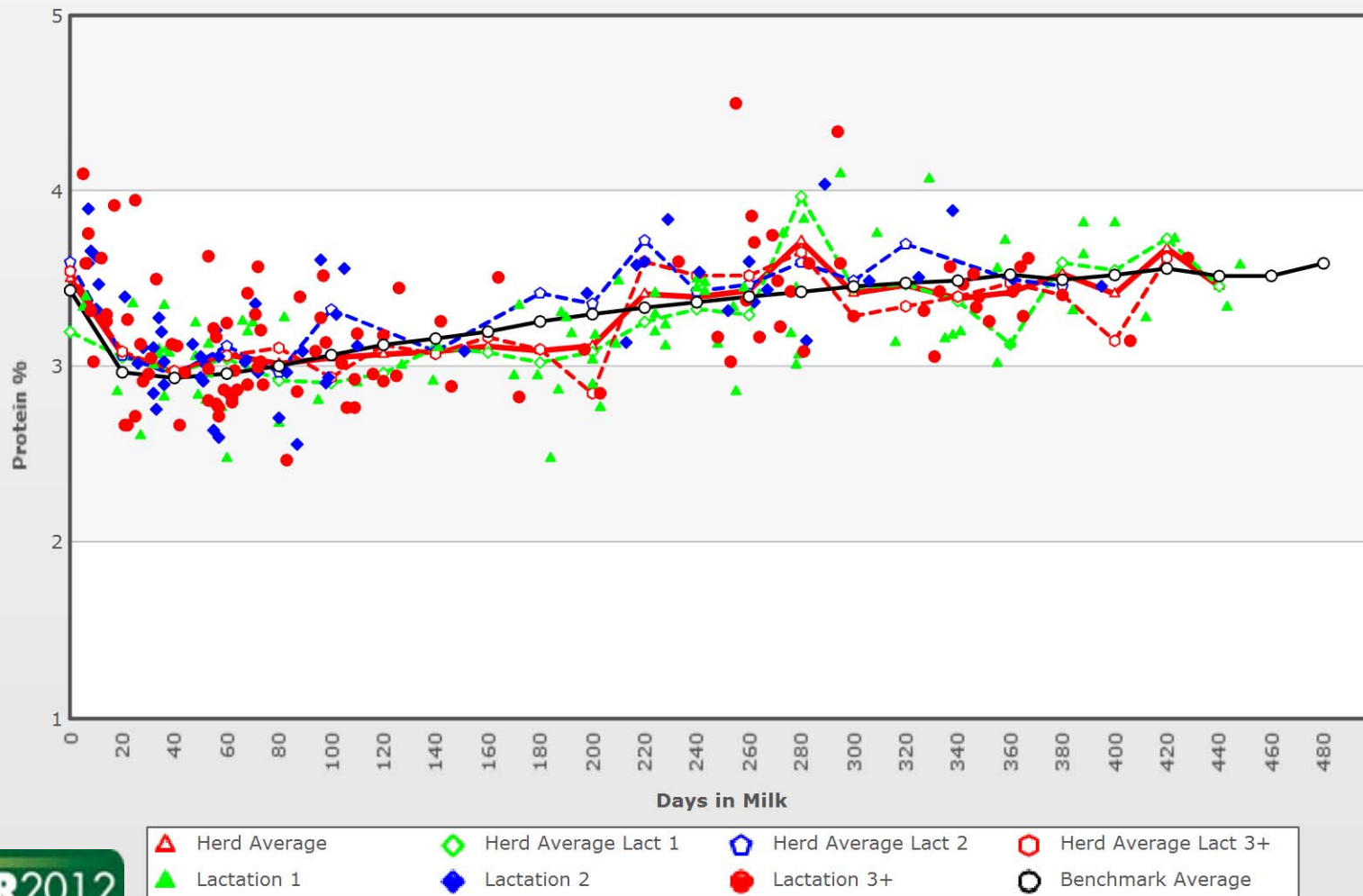


- |                                     |                               |                            |
|-------------------------------------|-------------------------------|----------------------------|
| ▲ Lactation 1 (<100 Days)           | ▲ Lactation 1 (101-200 Days)  | ▲ Lactation 1 (>201 Days)  |
| ◆ Lactation 2 (<100 Days)           | ◆ Lactation 2 (101-200 Days)  | ◆ Lactation 2 (>201 Days)  |
| ● Lactation 3+ (<100 Days)          | ● Lactation 3+ (101-200 Days) | ● Lactation 3+ (>201 Days) |
| ○ Herd Average Milk Production (kg) |                               |                            |

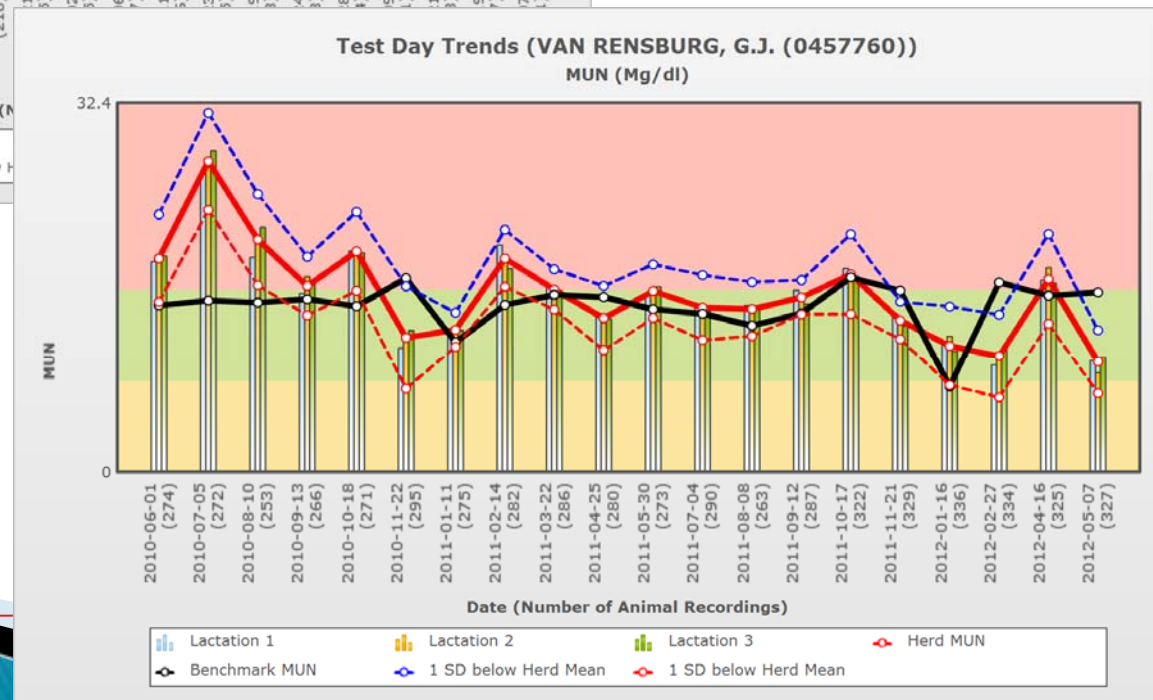
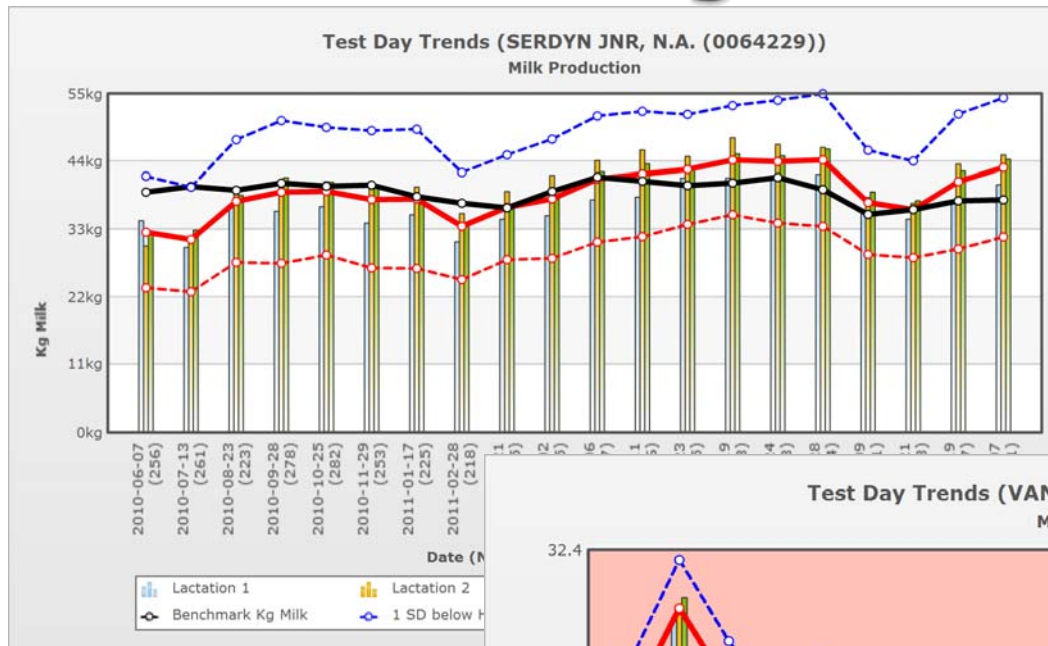
# Detailed graphs: Benchmarking on Test Day

Test Day Scatter (SERDYN JNR, N.A. (0064229))

Protein %: 2012-05-07 (Max DIM: 500)



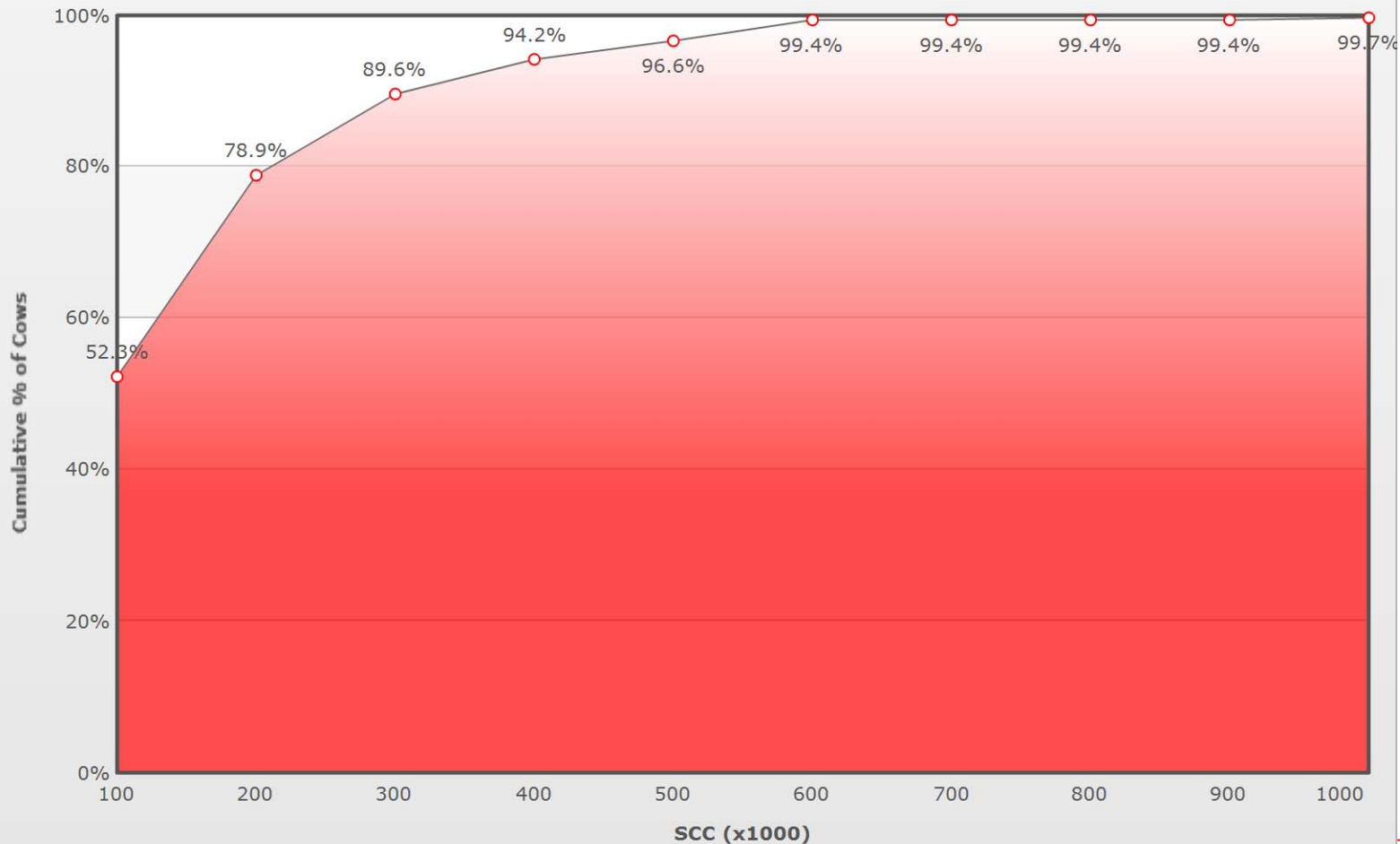
# Detailed graphs: Tendencies and Benchmarking



# Detailed graphs: Cumulative graphs

Cumulative % of Cows (VAN RENSBURG, G.J. (0457760))

Test Day: 2012-05-07



# Participation and Future prospects

- ▶ MR participation in SA generally low (25%–30% of dairy cows).
- ▶ Participation initiatives:
  - More appropriate and timely management information.
  - Accessible professional advice services of own choice.
  - Use of formal livestock structures (study groups, client base of feed companies, etc.).
  - Formal feedback and needs structure (industry owned).
  - Value-driven Milk Recording.

# Thank you



SA STAMBOEK  
STUD BOOK



Acknowledgements:

Milk South Africa

Milk Business Information Systems Incorporated