



EMBEDDED TECHNOLOGY SOLUTIONS

Silent Herdsman[®]: A Scalable Approach to Heat Detection

*Michael Gilroy¹, Craig Michie¹, Malachy Devlin¹, Annette MacDougall¹, Ivan Andonovic¹,
Andy Warne², Jonathan Davies²*

*¹ETS Ltd, Glasgow,
²NMR plc, Chippenham,*

Outline

- **Background**
- **Silent Herdsman Platform** [®]
- **Scalability**
 - Number of Base Stations
 - Multiple Farm Locations
- **Remote Access**
- **Conclusions**

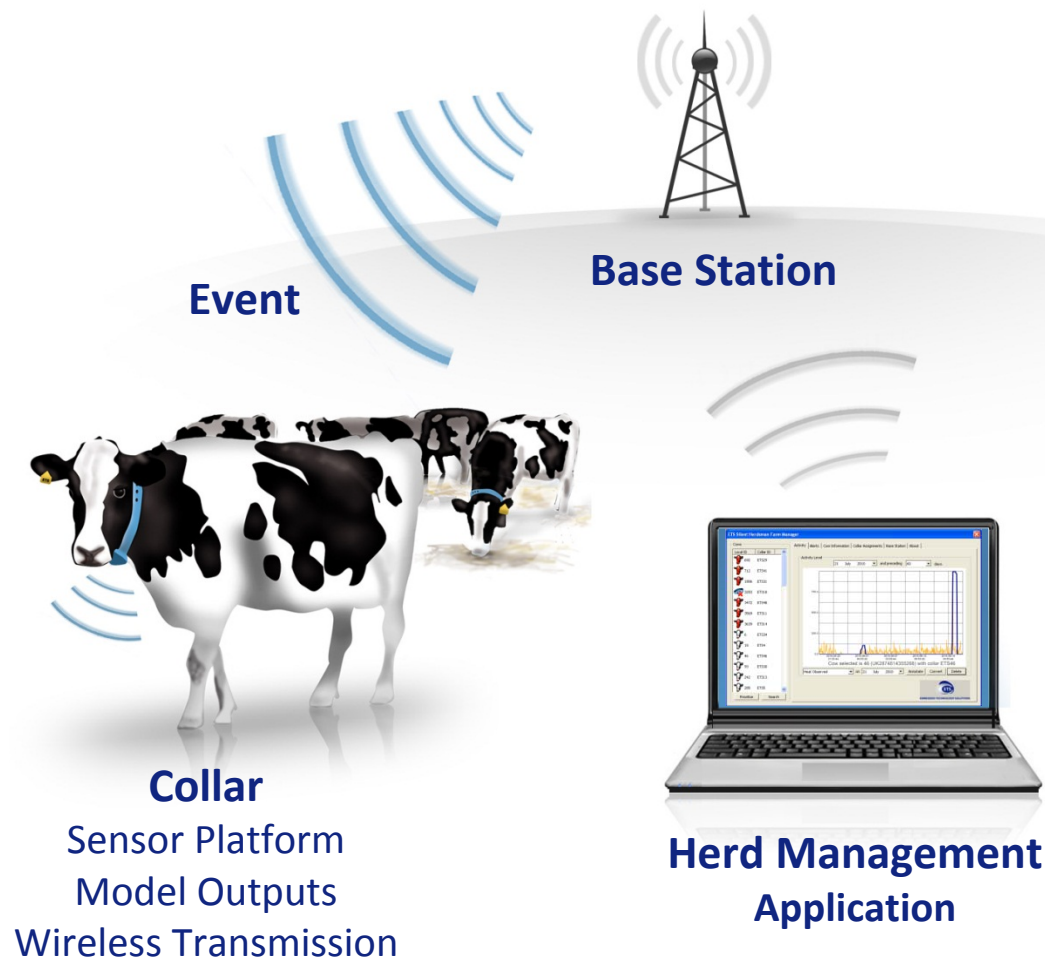
Background

- Precision Livestock Farming (PLF) is core to satisfying the increasing world-wide demand for animal products of good quality whilst heavily reducing environmental load and resource use
- throughout the world, farming concerns are becoming larger to remain profitable and/or the cost of skilled labour is increasing
- technology is used in many different ways within animal production focusing the valuable time of animal husbandry staff onto those animals that most require attention
- animal wellbeing is at the start of a chain that links to farmer profitability, product quality, consumer satisfaction and environmental sustainability
- the Silent Herdsman[®] is the basis for a highly scalable and highly functional decision support platform that assists in securing a sustainable food supply internationally



EMBEDDED TECHNOLOGY SOLUTIONS

The *Silent Herdsman*[®] Platform



**Inter-Herd DB UK
National DB
Global DB**



**Alert GUI, SMS,
GSM, Internet**

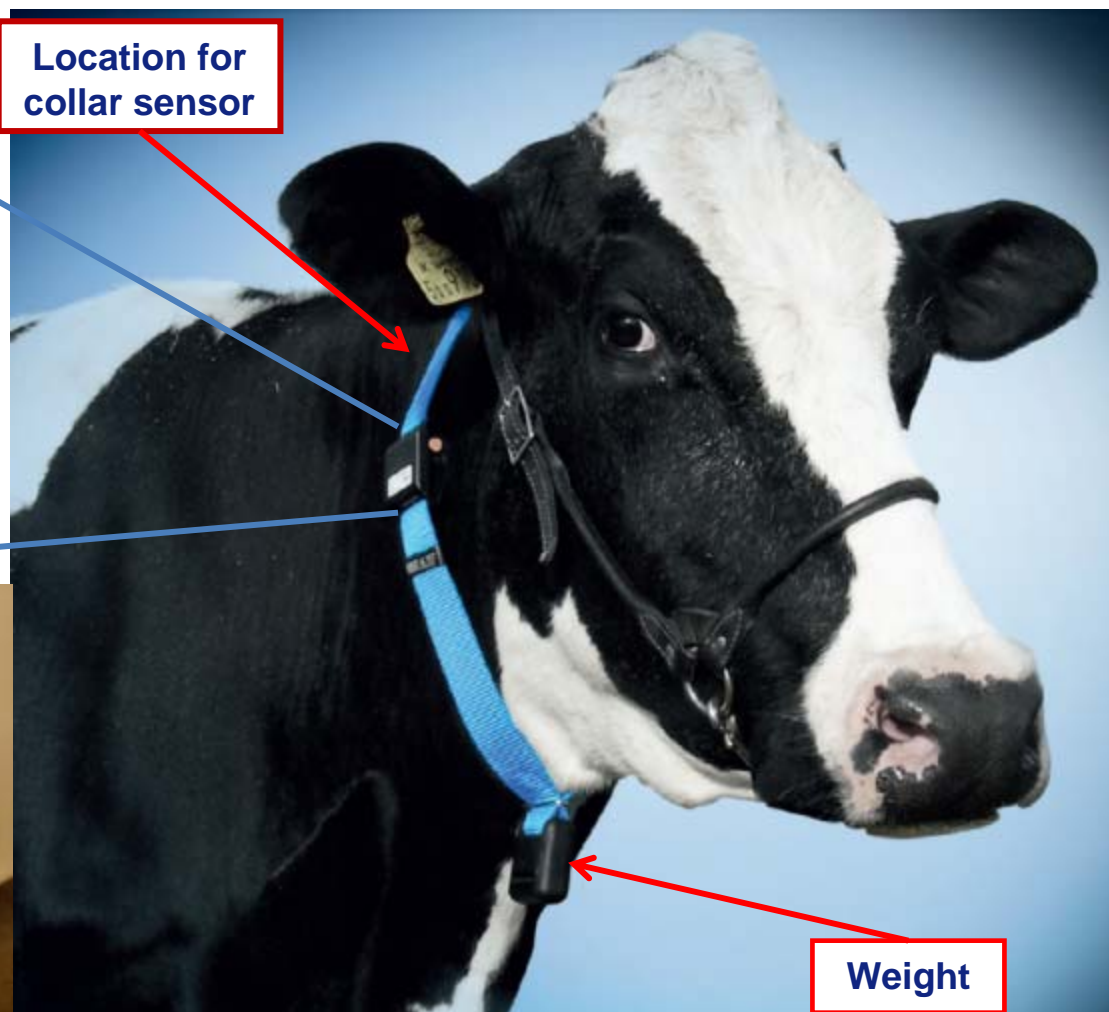
Silent Herdsman[™]



The Silent Herdsman® Smart Collar



Location for
collar sensor



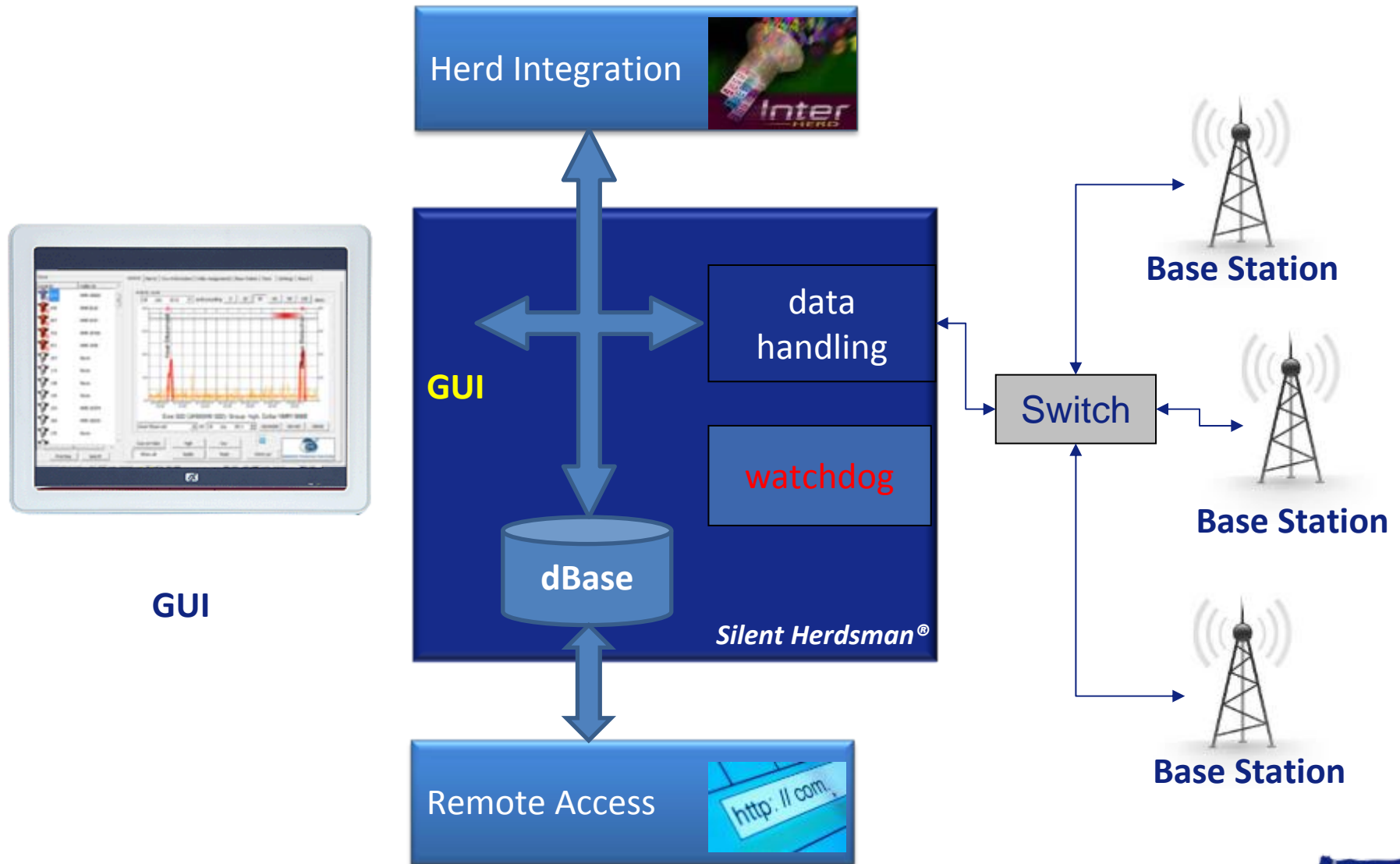
Weight



The *Silent Herdsman*® Platform; Scalability

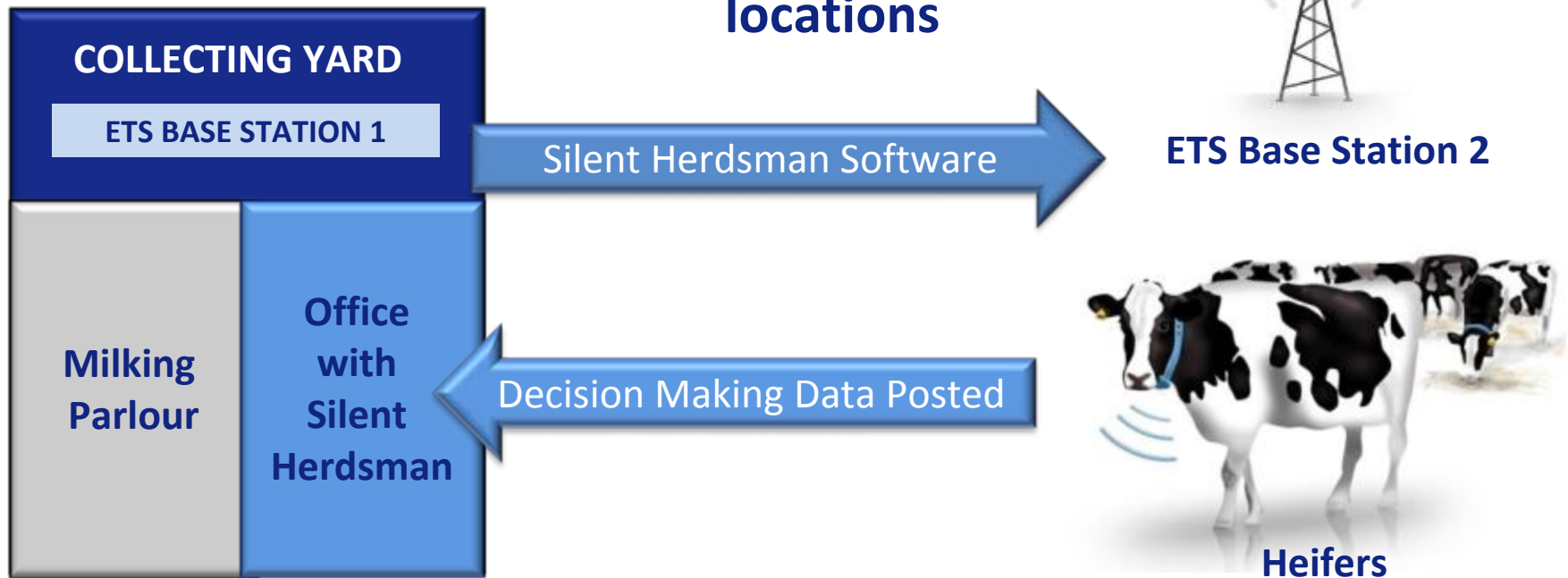


EMBEDDED TECHNOLOGY SOLUTIONS



Multiple Farm Locations

Wireless Relay between locations

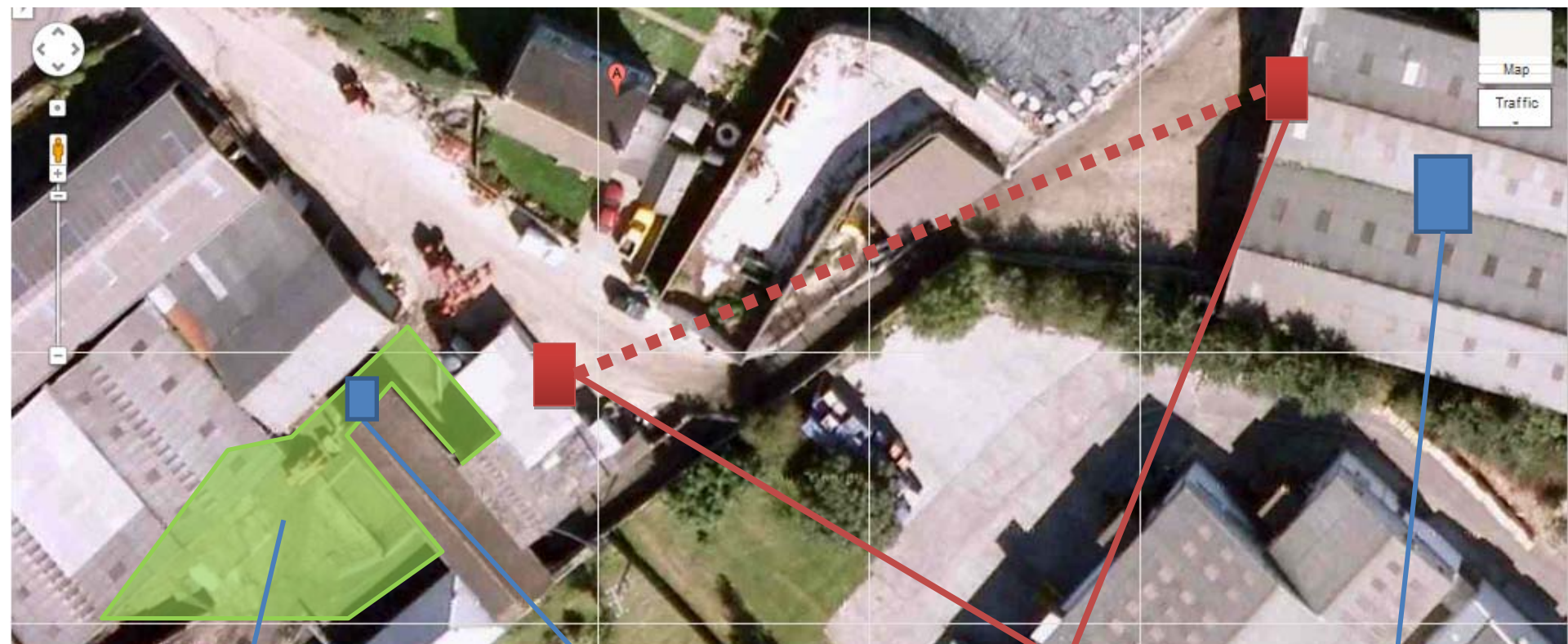


Farmers able to monitor remotely housed heifers using a Silent Herdsman relay base station

Between Base Stations; Wireless Relay Links

- **replaces physical cabling to connect between buildings and extend the range between Base Stations**
 - avoids digging up yard
 - avoids overhead cables
- **facilitates wider range of farm environments**
 - across roads
 - remote sheds
 - increased distance from PC
- **1.5k metres maximum line-of-sight range**

Example Farm



Area to be covered by local base station

High Gain Outdoor Antenna

Wireless Relay Link

2nd Base Station
Middle of Shed for good coverage, and not conflict with other base station

Remote Access

- **Broadband Bridge**
 - 1.5km Line-of-Sight
- On-Farm WiFi
 - ½ Broadband Bridge



Remote Access; Broadband Bridge

- **wireless link between the farm house Internet Access and the Silent Herdsman PC enabling remote support and access**
 - *Wireless Access Point*
 - Connected to the broadband router
 - *Wireless Client Router*
 - Connected to the Silent Herdsman PC

Remote Access

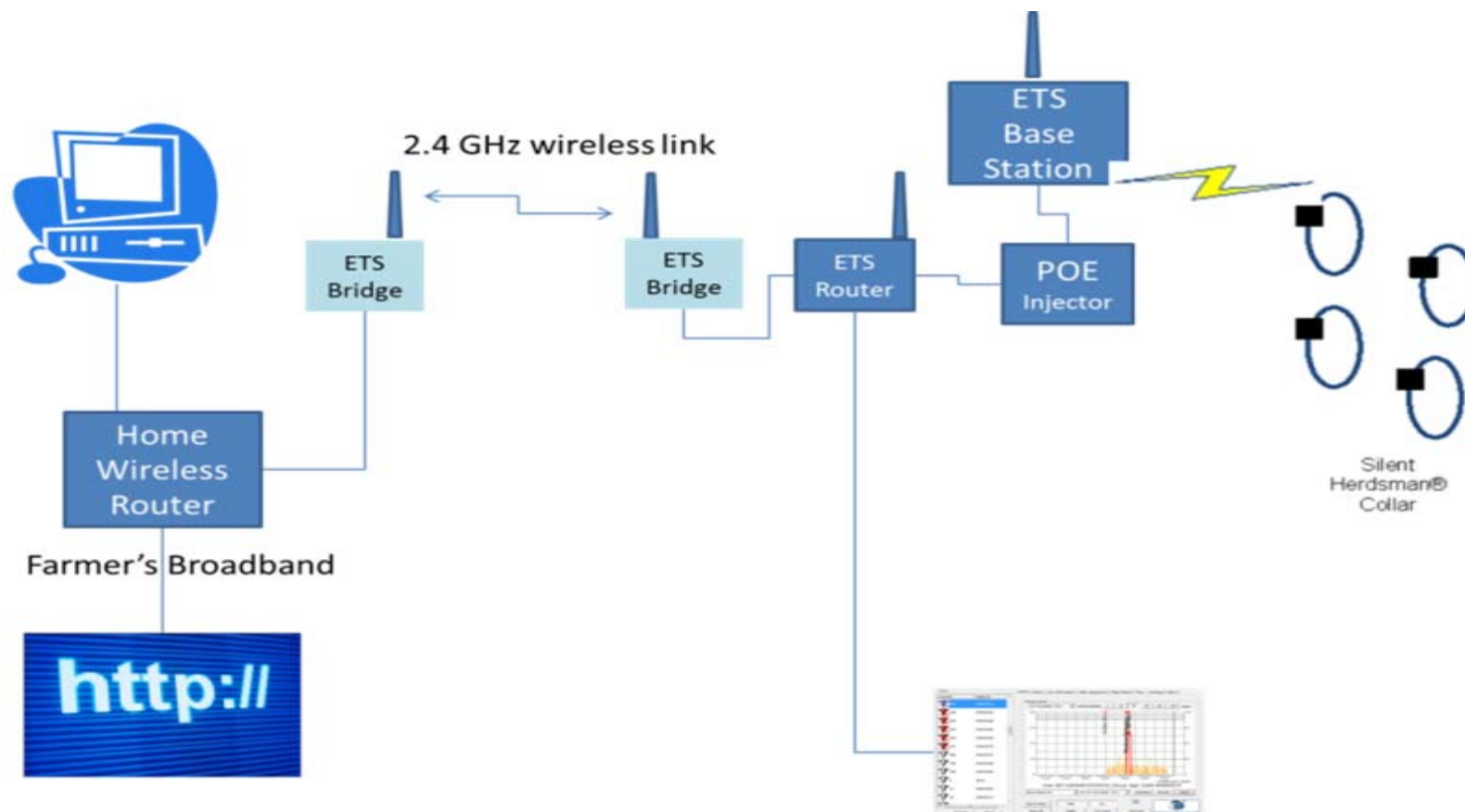
- Broadband Bridge
 - 1.5km Line-of-Sight
- **On-Farm WiFi**
 - **½ Broadband Bridge**



Remote Access; On-Farm WiFi

- if a farm has an existing Wi-Fi network that can be utilised then only the wireless client router may be required, reducing the cost of installation
- wireless access points and client routers perform best with a direct line of sight to one another
 - *500m range line-of-sight*

Enhanced Coverage



The Future of Farming

Wireless Sensor Network , updating farmers with real data...in real time anywhere ,any country, any time !



Creating 24x 7 Animal Welfare Index.....using Condition Based Monitoring towards improved Asset Management.