

ICAR General Assembly and Management Workshop

Poreč (Croatia) 11 – 14 May 2009



Recording and sampling in large herds. Experiences from practice.

Manfred Hammel - LKV Brandenburg e.V.



Germany Federal States

Eastern Germany

Land Brandenburg



Tasks of the LKV Brandenburg e.V.

- ☐ **Milk Recording**
- ☐ **Milk quality testing**
- ☐ **Marking and registration of the cattle**
- ☐ **Management of the pig, sheep and goat data bank**
- ☐ **Dairy farmer consultation**
- ☐ **Feed analysis, water analysis**
- ☐ **Soil analysis**
- ☐ **Organic fertilizer analysis**
- ☐ **Input, fermenter content and output digester gas**
- ☐ **Mastitis analysis**

Milk Recording

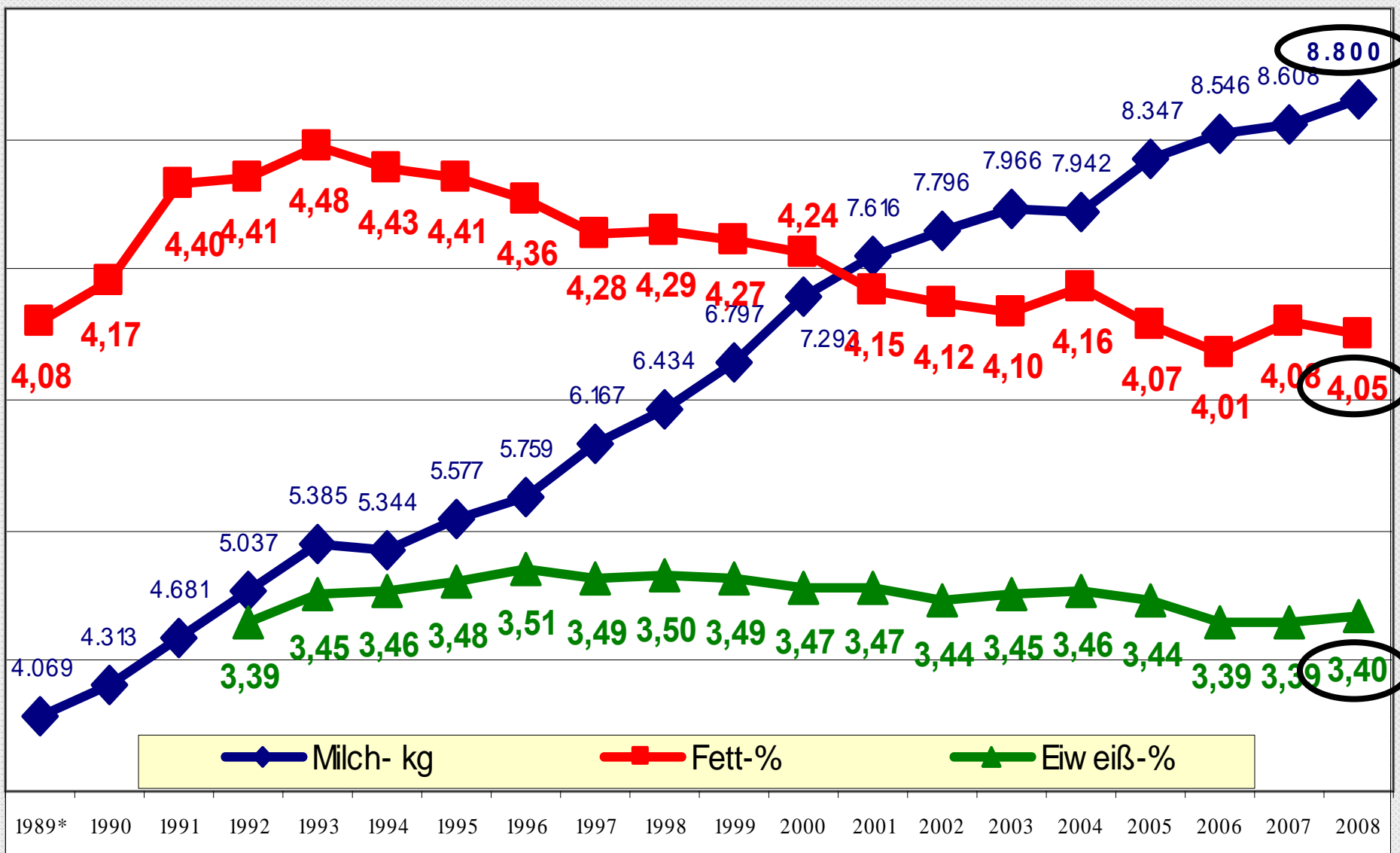


***Technician Mrs Heidelore Dehnert, during Milk Recording in
Agrofarm GmbH Hammer/Liebenthal***

Milk Recording 2008 - Land Brandenburg

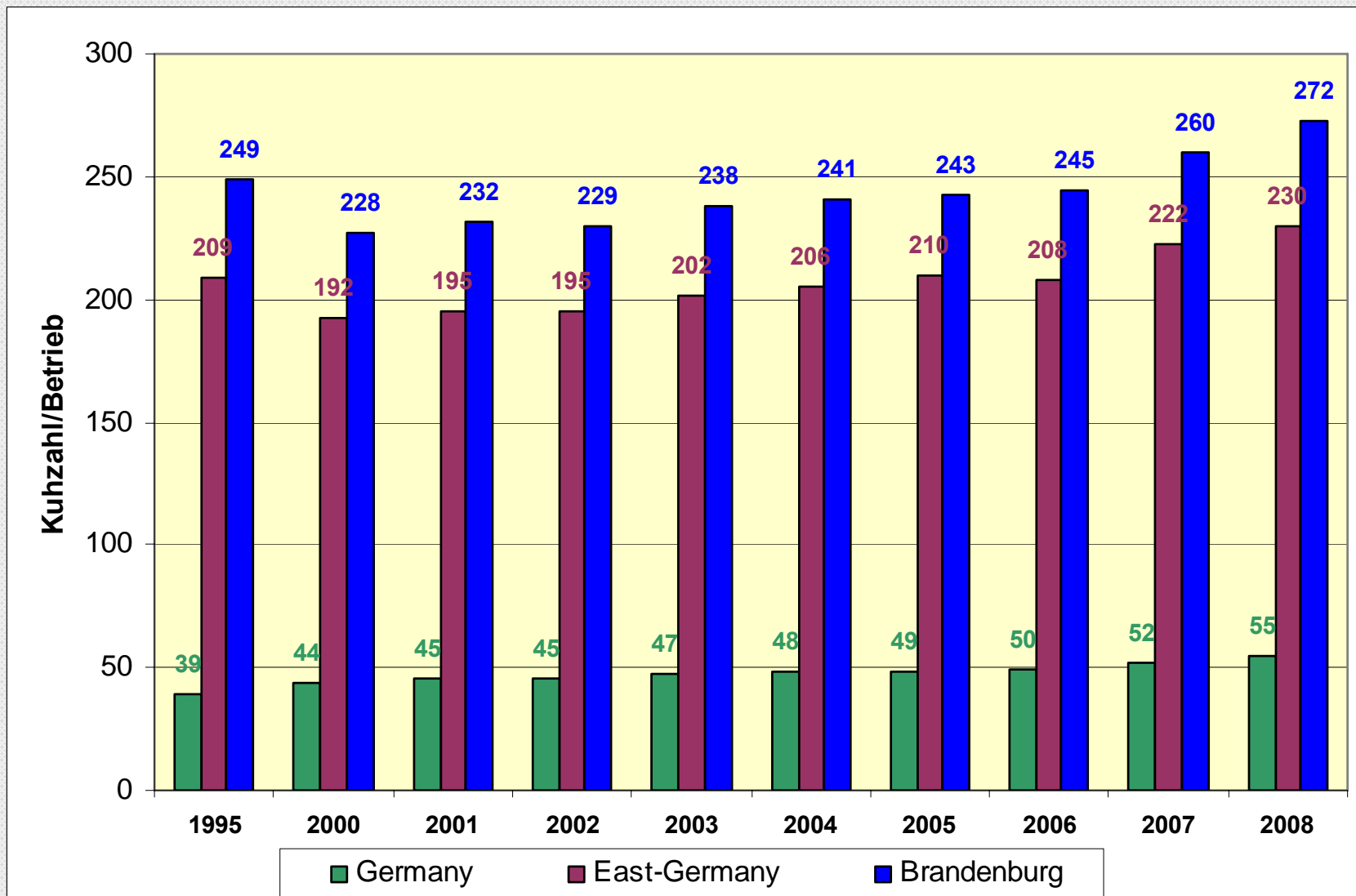
category	
recorded cows (Ø year)	162,764
recorded herds (Ø year)	601
average cows in recorded herds	272
cows in recorded herds min / max	1 / 2,884
3x milking herds / cows	85 / 30,446
%	14 / 19
milk recording density in %	97.5
milk recording method A ₄ / B ₄ in %	50.5 / 49.5
processing times in days	3.5
recorded herds und cows / technician	8 / 2,050

Development of milk yield Land Brandenburg 1989 to 2008



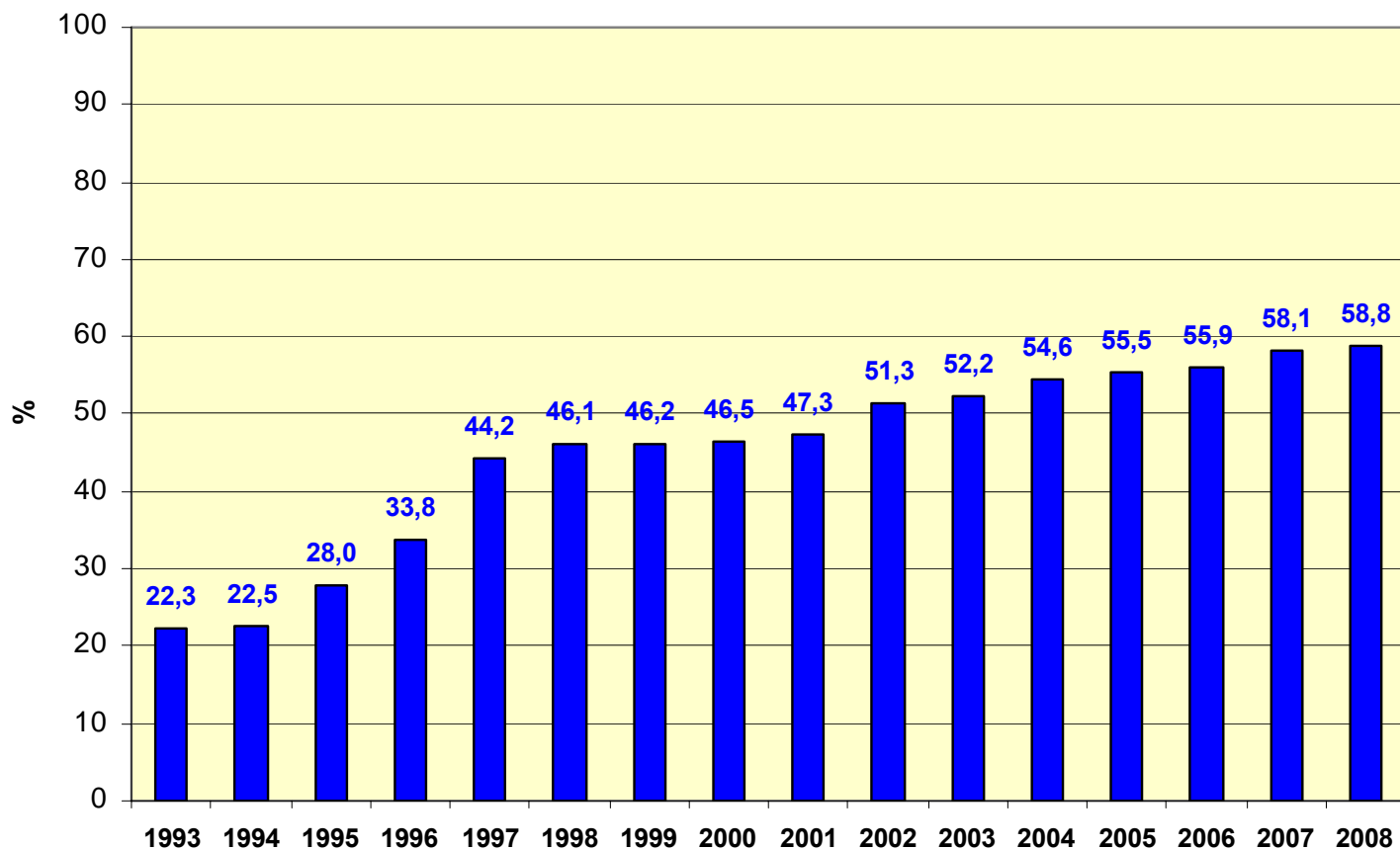
Milk Recording

average cows in recorded herds 1995-2008
Germany, East Germany, Land Brandenburg

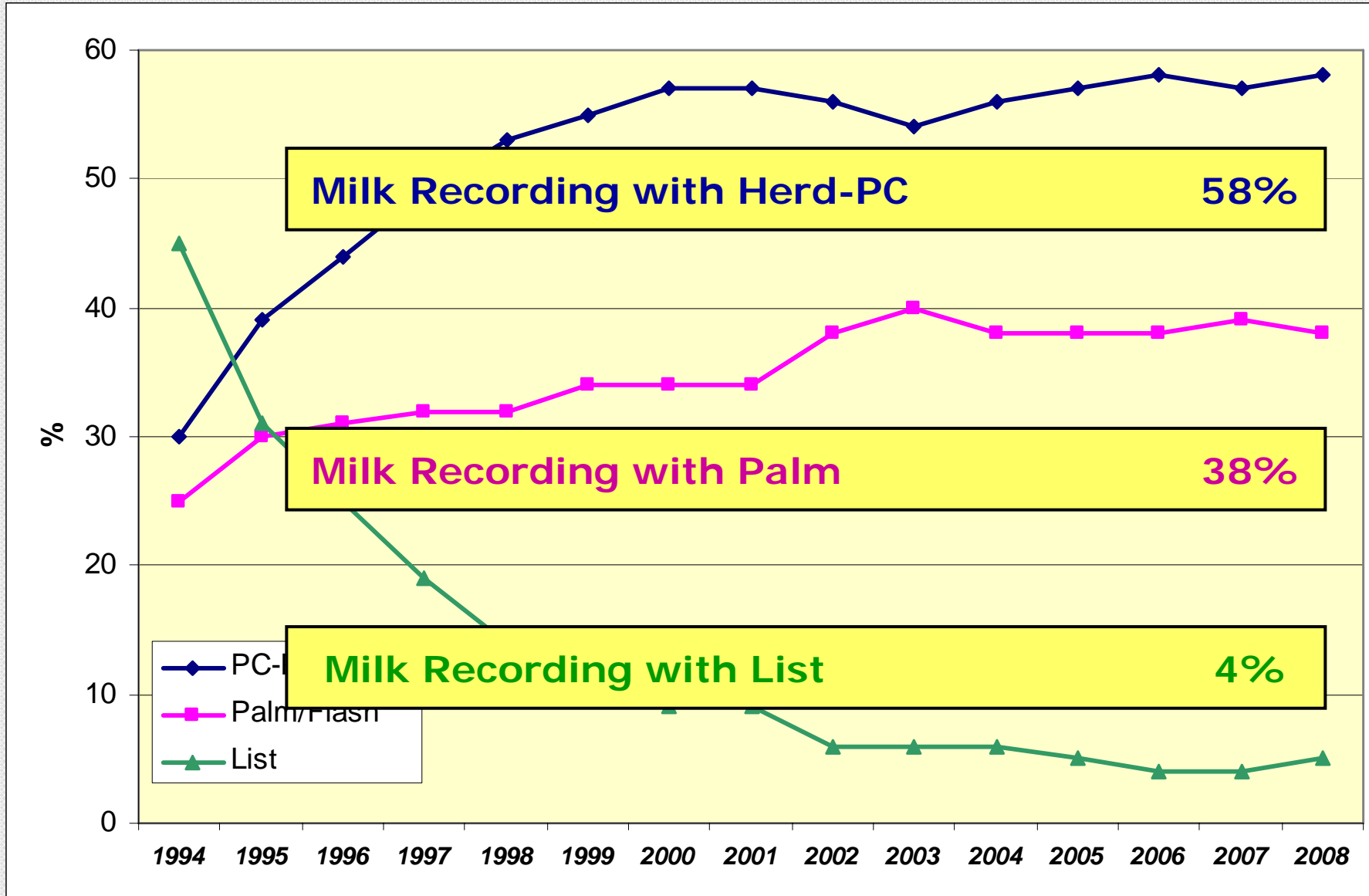


Milk Recording Devices (MRD)

	stationary MRD	mobile MRD
2008	7.404	1.610



Transaction of Milk Recording (MR)



Milk Recording in large herds

Equipment for Milk Recording

- ☐ Box with vials
- ☐ measuring beaker
- ☐ Scaled pipette
- ☐ Dispenser for conservation
- ☐ Accompanying document
- ☐ if necessary mobile RD
(ICAR-approved)
- ☐ Palm, Aqua pack
- ☐ Printer, Modem



Milk Recording in large herds

General Preparation of Milk Recording



- ☐ All cows of a stable are included in the MR
- ☐ All cows are flagged with eartag
- ☐ Changes of the Milking procedure, the Milking times and the feeding before Milk Recording are not valid
- ☐ Any insets of hormones or active agents to promote the milk performance are prohibited
- ☐ The MR is realized evenhanded, conscientious and punctual
- ☐ Farms with two times milking start MR in the evening
- ☐ Farms with three times milking start MR at noontime

Milk Recording in large herds

Preparation of Milk Recording Herd-PC



- ☐ Boxes and if necessary RD (ICAR-approved) have to be ordered in necessary number
- ☐ Accesses and leaving as well as birth for the period after the last MR have to be listed
- ☐ Status **Dry** and **pregnant** have to be listed
- ☐ conservation
- ☐ Open "MR" in and box number and milking frequency
- ☐ print PC-prep
- ☐ if necessary annually app



Milk Recording in large herds

Realizing

- Identification (on list)
- Write on display automa
- Mix the measur
- sampling with so
- fill the the bo each c milking
- empty



usual
on
ing
and shake
all the

Milk Recording in large herds

Data acquisition and data provision in stable Herd-PC



□ Milk yield has to be recorded for every cow

■ (data record per cow, number, vial number, date (is omitted with herd-PC))
to the herd-PC

Landeskontrollverband Brandenburg e.V.
Straße zum Ruten Loch 1
15977 Walsleben

Probenkastenbegleitschein für Milchleistungsproben

Anschritt des Betriebes: Landes-Prakt. Betrieb Altdöbern Kreis: 66

Strasse: Hierstall 1

PLZ/Stadt: 03229 Altdöbern

Kasten Nr.: 29924

Betriebs Nr.: 91361008

Abrechnungseinheit: 03

geprüft am Datum: 060509

Id. Kasten Nr.: 02

Flaschen Nr. der letzten Probe mit Milch im Kasten: 100

Anzahl Kästen gesamt: 03

Harnstoffuntersuchung (Kästchen ankreuzen): ☒

Anzahl der Proben: 100

Proben Nr.:

(falls erforderlich Rückseite benutzen)

Anschritt des Leistungsprüfers: Carola Hadrack, Reuthener Str. 46A

Haus/Strasse: 03930 Teltow/OT Klein Lohr Telefon: 0356981370

PLZ/Stadt:

tion list

box

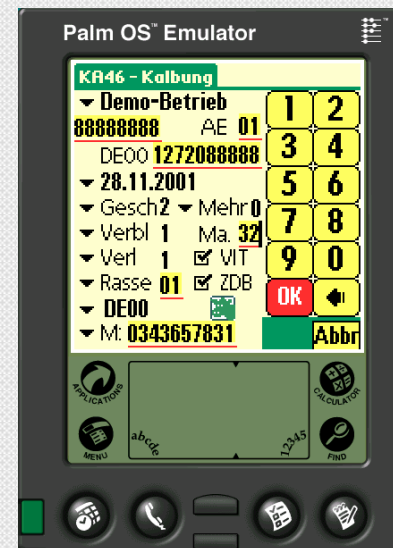
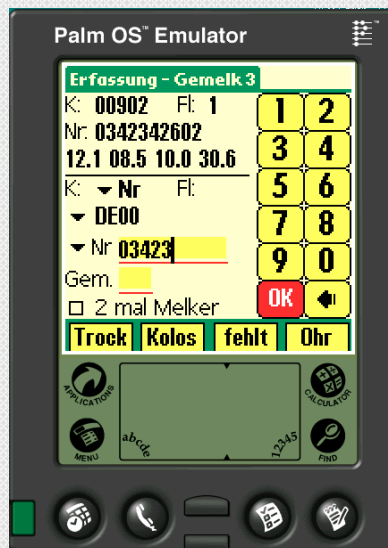
quency)

< yield

- Fill in accompanying documents (farm, date, check method, technician, box number, milking time)
- Validity check, whether all of the data are listed
- transfer the MR-Data, via dial-up, mail-box or electronic volume to the LKV

Milk Recording in large herds

Milk Recording with Palm



Milk Recording in large herds

Preparation of Milk Recording Palm



- ❑ Boxes and if necessary RD (ICAR-approved) have to be ordered in necessary number
- ❑ Data stock is located in the Palm-Program
- ❑ Accesses and leaving as the last MR have to be
- ❑ conservation of needed
- ❑ open "MR" with Palm-P
- ❑ allocation of the Milking via Palm-Program
- ❑ enter Status **Dry** and **C**
- ❑ cows
- ❑ if necessary the mobile annually approved RD)



Milk Recording in large herds

Realizing Milk Recording Palm



- ☐ Identification of the cows via automatic Systems or visual (on list)
- ☐ Type in the milk yield into the Palm-Program (read off on display or scale, when mobile RD)
- ☐ Mix the entire milk thoroughly and transfuse it into a



- ☐ empty measuring beaker after each milking

Milk Recording in large herds

Data acquisition and data provision in stable Palm



- Milk yield (data acquisition via manual recording)
- Fill in data (data provision via manual recording)
- Validity of data (data validation via manual recording)
- transfer the MR-Data from Palm via blue-tooth Modem and e-Mail to the LKV



Palm OS™ Emulator

Erfassung - MLP	
Bestand	14
1x gemolken	0
2x gemolken	6
3x gemolken	6
Gesamtgemelk	12
Anzahl Trocken	1
Anzahl Kolostrum	0
Anzahl fehlende	1
Anzahl unerfasst	0
Anzahl vollst.	13

APPLICATIONS
MENU
abcde
12345
CALCULATOR
FIND

Milk Recording in large herds



Sample Transport

- Provision of the samples and documents in the Farm or in collecting points and transport with reefer
- Collection of the samples through own courier service according to schedule



Milk Recording in large herds

Sample accepting and analysis

- Incoming inspection
 - (farm, sample number, conservation, fill level, completeness of the documents)
- Analysis: fat, protein, lactose, somatic cell, urea



Milk Recording in large herds

Processing Data and Inform the Farmer

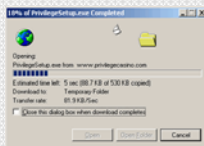


- ☐ Merging: cow number and milk yield with ingredients of milk (milk composition)
- ☐ Performance Calculation (Day of MR, milking average, stable average, sliding annual performance, 100-days-performance, 305-days-performance, annual performance, 305-daily output, life-performance, and so on)
- ☐ Data storage

Inform the Farmer

- ☐ The LKV and the Data Processing Center inform the farmer via:

Internet



Fax



Mail



Processing time 3.5 days (from first day of MR to day of informing farmer)



Thank you for your attention!

Milk Recording in large herds

Milk Recording with Herd-PC



- ☐ 1,501 cows
- ☐ 10,279 kg Milk yield
- ☐ 3.91% fat
- ☐ 3.25% protein
- ☐ 4 B-technician
- ☐ 3x Milking
(Gesamtbestand)
- ☐ Milking parlor:
Boumatic carrousel
60 places, outside
- ☐ MRD
Perfection 3000



Milk Recording in large herds

Milk Recording with Herd-PC



- ❑ 2,378 cows
- ❑ 9,359 kg Milk yield
- ❑ 3.99% fat
- ❑ 3.39% protein
- ❑ 4 A-technician
- ❑ 3x Milking
(Teilbestand)
- ❑ Milking parlor:
Gea Westfalia Surge
carrousel
60 Melkplätze, inside
- ❑ MRD Metatron



Milk Recording in large herds

Milk Recording with Palm



- ☐ 206 cows
- ☐ 7,761 kg Milk yield
- ☐ 4.11% fat
- ☐ 3.52% protein
- ☐ 1 A-technician
- ☐ 2x Milking
- ☐ Milking parlor:
Gea Westfalia Surge
carrousel
- ☐ 20 Melkplätze, inside
- ☐ MRD Metatron





Thank you for your attention!